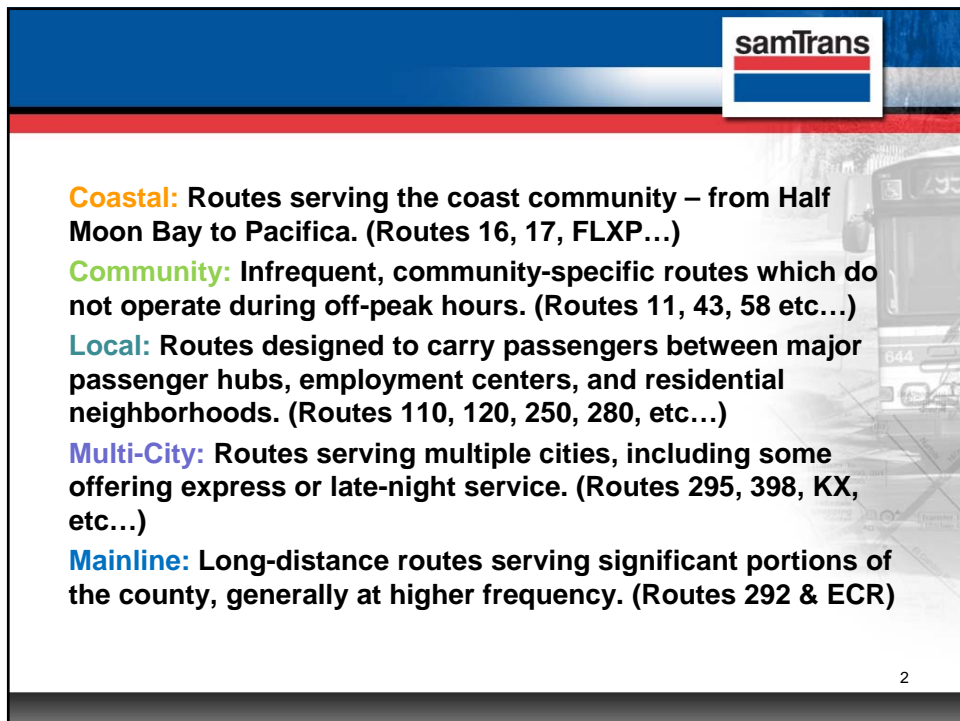



Dashboard Jul. – Sep. 2016

Community Relations Committee
San Mateo
February 1, 2017
Agenda Item 7



Coastal: Routes serving the coast community – from Half Moon Bay to Pacifica. (Routes 16, 17, FLXP...)

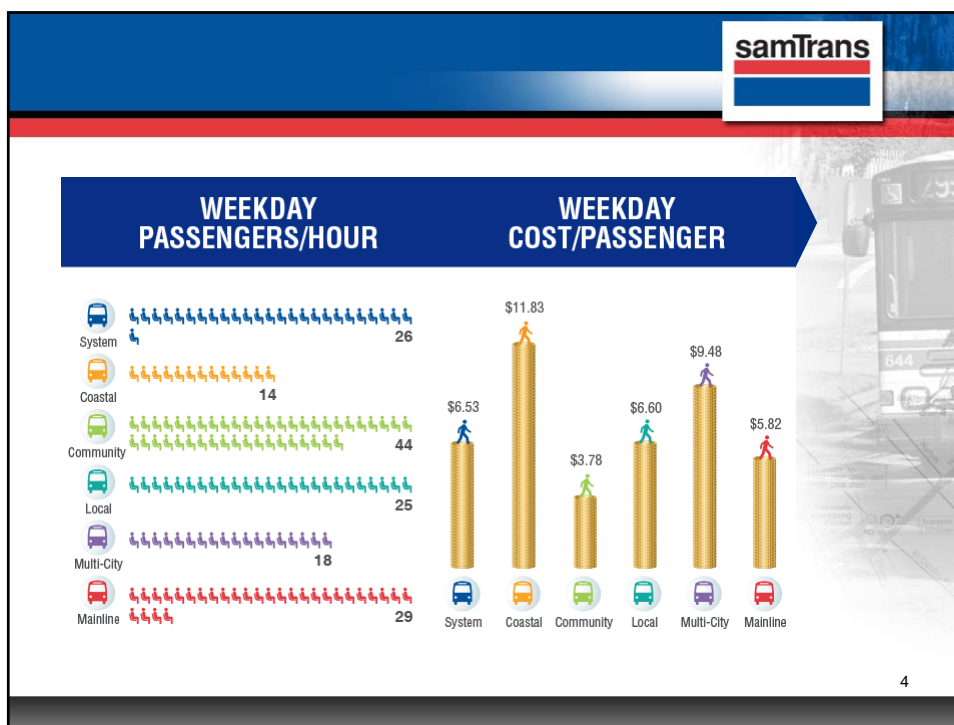
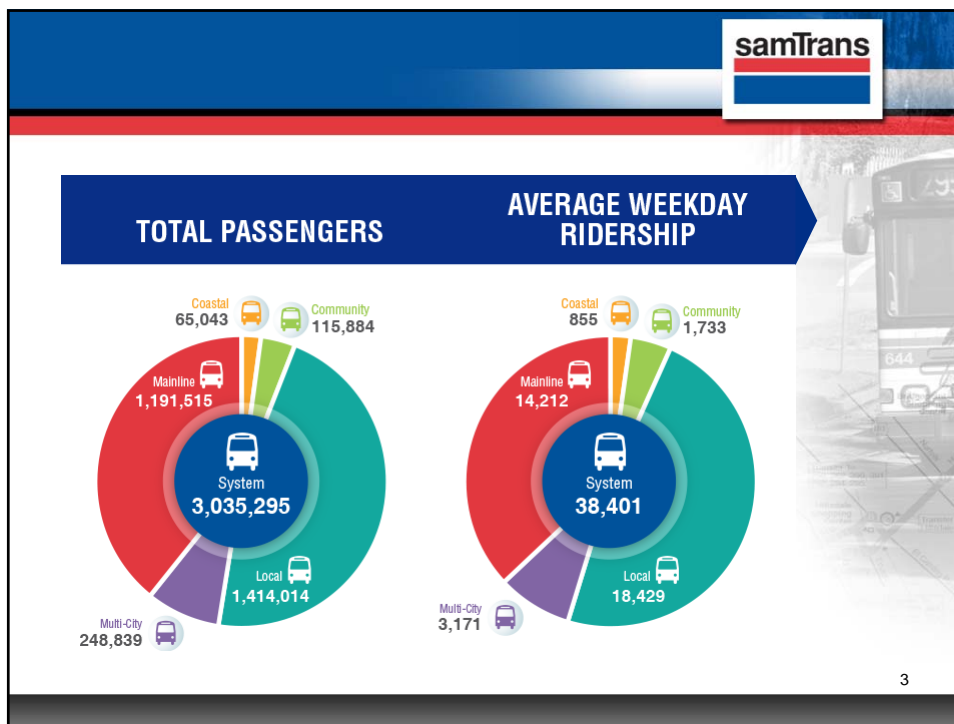
Community: Infrequent, community-specific routes which do not operate during off-peak hours. (Routes 11, 43, 58 etc...)

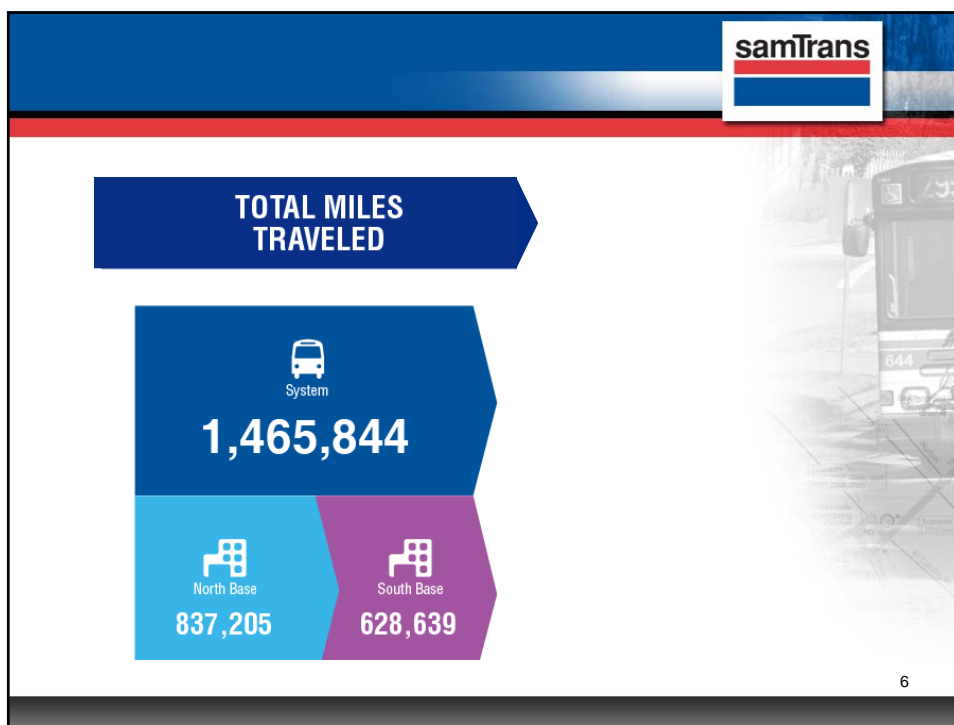
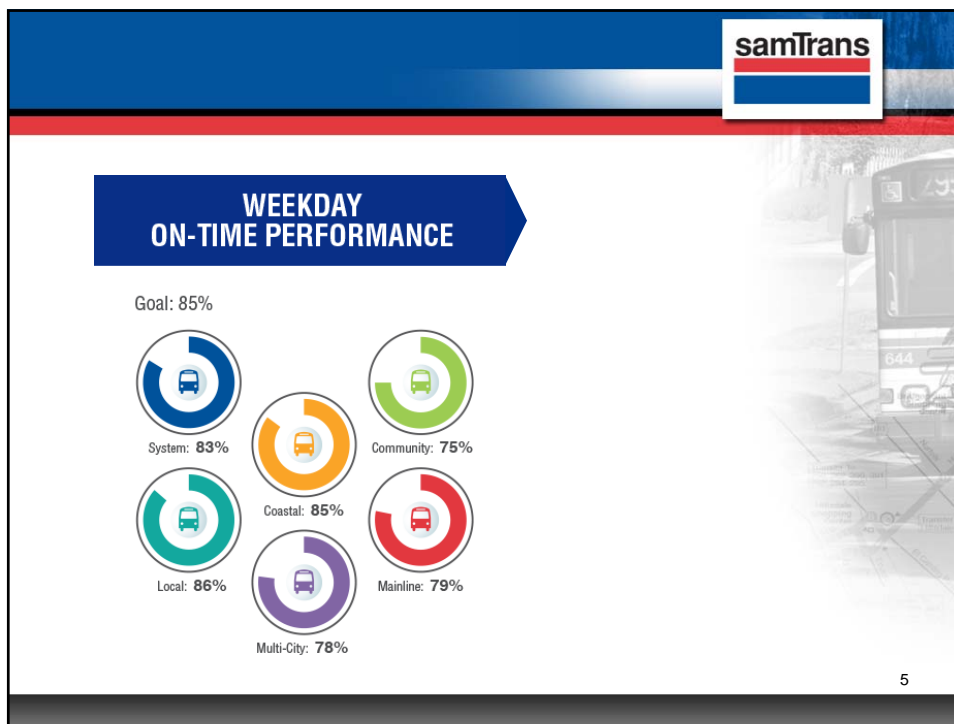
Local: Routes designed to carry passengers between major passenger hubs, employment centers, and residential neighborhoods. (Routes 110, 120, 250, 280, etc...)

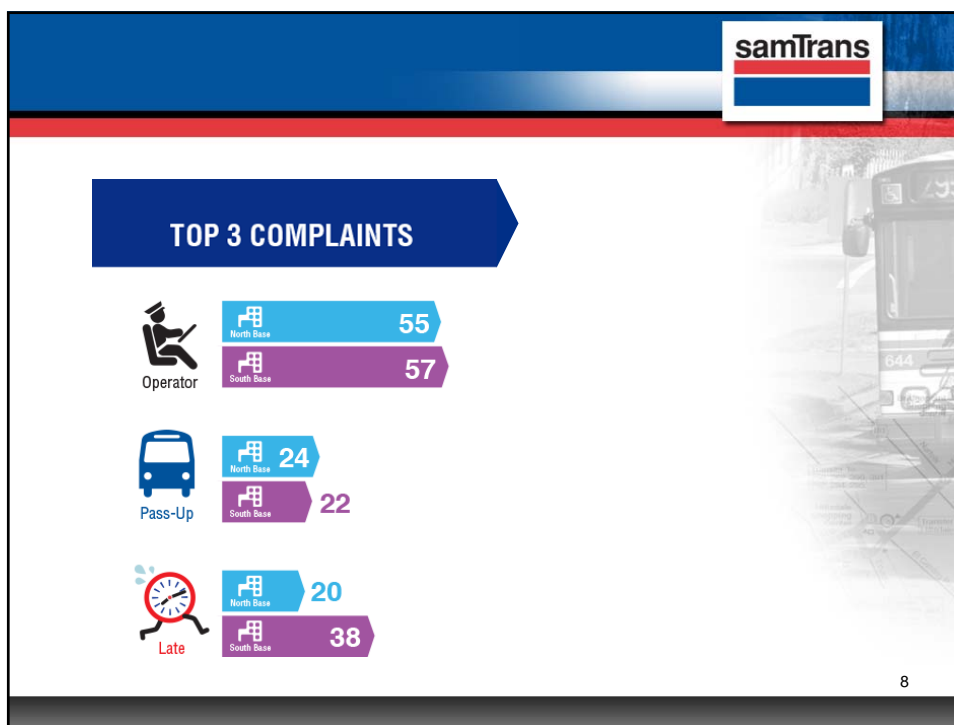
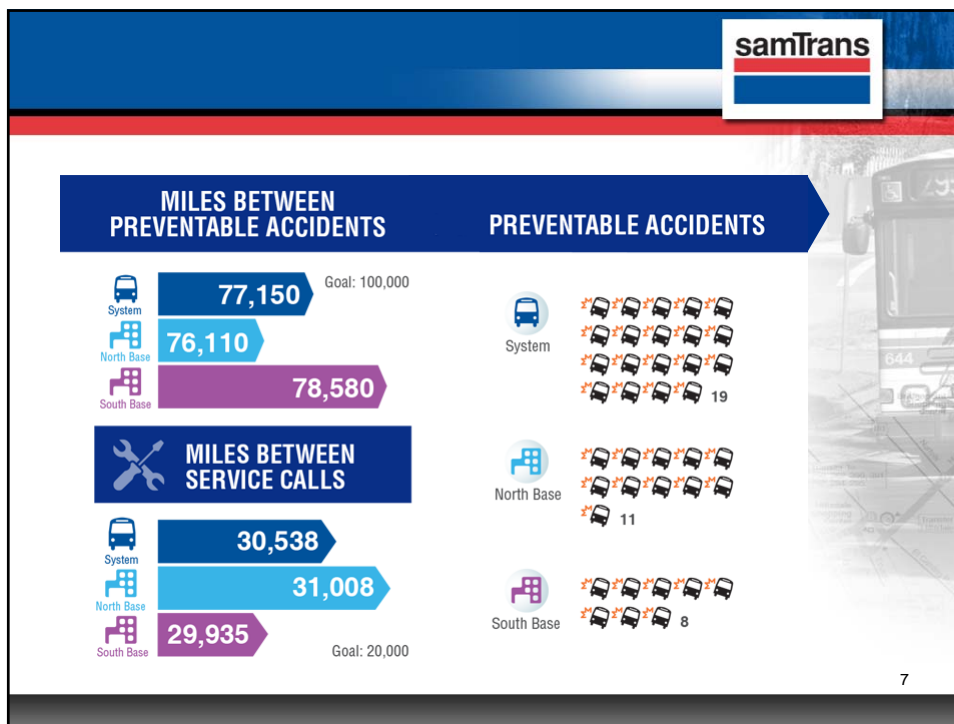
Multi-City: Routes serving multiple cities, including some offering express or late-night service. (Routes 295, 398, KX, etc...)

Mainline: Long-distance routes serving significant portions of the county, generally at higher frequency. (Routes 292 & ECR)

2









FAREBOX RECOVERY RATIO

Goal: 20%



System: **16.1%**